



www.dmssnamibia.com

**LEADERS IN
MARINE COMMERCIAL,
OFFSHORE OIL & GAS MARKET**



Service, in short,
is not what we do, but who we are.



Our Company, Proudly Namibian



Dynamic Marine Survey & Solutions is a Maritime Service provider in Africa, offering a wide range of services to the oil and gas industry. Our team of experienced professionals operates both locally and internationally to provide high-quality solutions to our clients.

Our in house engineers & surveyors specialize in hull & machinery surveys, as well as cargo surveying. We also repair and service DP Systems, automation, instrumentation and perform mechanical overhauls on any type capital equipment like thrusters, deck machinery, engines and gearboxes.

With our vast combined knowledge of the offshore industry, we at DMSS provide turnkey solutions for our clients in the offshore and commercial market.

DMSS is based in Namibia - Walvis Bay, South Africa - Cape Town & the Netherlands - Rotterdam, in order to provide responsive support to all types of vessels and clients operating worldwide in the critical oil & gas market.



Experience

From our offices in Namibia - Walvis Bay, South Africa - Cape Town & the Netherlands - Rotterdam, we serve our worldwide customer base in marine surveying, upgrading, repairs, project management and technical advice of DP systems, sensors, control units and any capital mechanical equipment.



Experience unmatched 24/7 support in the time-critical maritime, oil, and gas industries with our leading marine electronics, mechanical sales and service company. Our dedicated team of in-house surveyors, mechanical and electrical engineers ensures rapid response and expertise, catering to all your repair and installation needs for electronic equipment. From DP systems and navigation to automation, propulsion controls, and mechanical solutions, rely on us for the fastest and highest quality service, surpassing your expectations in equipment service and supply.



Fully digitalised, quick response and a dedicated staff are key factors for serving our clients.

In-house superintendents to lead and manage complex repairs, upgrades, overhauls on both new build vessels or on-board your existing vessels.



“We strive to achieve top quality service with the highest customer satisfaction possible”



Members

Werner Ahrens

Position: Co-Owner

Background: Specialised in the field of marine surveying, Werner handles complex insurance claims for clients all over the world. With his vast knowledge of commerce, the shipping industry and Classification rules & regulations, Werner can assist you with hull & machinery and cargo surveys with clear and concise report writing.



Andre Zandberg

Position: Co-Owner

Background: With a cum laude in electrical engineering Masters degree in the pocket, Andre started working in the maritime industry specialising in the controls and electrics of vessels. For the past 8 years he has been focussing on upgrades and design improvements. With his experience both in the dry-docks, on open water and as a sales manager, Andre will assure you have control over your vessel.



Patrick Adam

Position: Co-Owner

Background: With deep roots in the thriving Dutch market and a lifelong connection to the maritime industry, Patrick brings over 18 years of valuable experience to our team. Armed with a degree in mechanical engineering, Patrick embarked on his career as a service engineer, traversing the globe to repair vessels of all kinds. As his expertise grew, he transitioned from the dock floors to the prestigious role of managing three Rolls-Royce entities in Africa. Patrick's specialization lies in the meticulous service and repair of all mechanical or hydraulic components comprising the capital equipment aboard a vessel. Trust in his unparalleled knowledge and skill to ensure the seamless operation and maintenance of your vessel's essential machinery.





Services

We see flexibility, communication, standardized documentation and fast reporting as our key to deliver quality service with competitive pricing, when you need it.

No matter the challenge you face, we're here to assist you. Whether it's dealing with qualified manning shortages during dry dockings, squeezing in inspections for broken pumps, failing sensors, or damaged hulls within tight sailing schedules, addressing overnight breakdowns, recommissioning vessels that have been in layup, or ensuring a smooth handover to an important customer with outstanding warranty items—we have the solution. Our qualified staff excels in planning dockings, organizing OEM or class service attendances, and providing around-the-clock support for vessels in every country worldwide, 365 days a year. Count on us for comprehensive assistance that exceeds your expectations. We are specialized in annual DP and 5 yearly FMEA trails.

With our vast experience in the different DP platforms we can service, replace or upgrade any system or sensor and perform troubleshooting on any control platform. We can perform troubleshooting and solve any issue on your thruster, CPP, rudder, winch or control equipment.

Experience seamless installation and wiring services for your new system or equipment upgrades with our expert assistance. Our exceptional flexibility, coupled with our strategic office location and extensive experience in working in challenging environments, allows us to promptly travel and attend to your vessel anywhere in and around Africa. Rest assured, we're prepared to respond at a moment's notice, providing reliable support tailored to your specific needs. We can assist in any major or minor repair you may need in the dry dock, port or on open water. Along with our contacts in the maritime industry we act when it is required. We are your competitive price alternative to the OEM's.

When we attend your vessel, we work with a structured and standardized day to day report, this will keep you updated on the work executed on a day to day basis. A financial overview will be provided every day we work. This results in an open and clear cost vs work executed overview.

Digitalization, open communication and good relations with partners, sub contractors and the original equipment makers are key to a successful project.



Service Contracts:

At Dynamic Marine Survey and Solutions we believe in long term partnerships. Our aim is and has always been to provide our specialist services in a long term relation. For several of our European customers we designed long term service contracts where we take all maintenance or surveying tasks out of your hands.

From the maintenance planning to the execution anywhere in the world, we do all in house.

Fixed price per month, 24/7 support via phone or email, standardized communication and reporting per day, week or month to suit all your needs and to let you focus on your business performance and not your business maintenance.



Service Agreements:

Dynamic Marine Survey and Solutions is an approved ZF Service Point. A ZF Service Point is a service and repair workshop that fulfills the qualitative requirements with respect to appearance, qualification and workshop equipment that ZF requires. Our sister company, Dynamic Marine Spare Parts cc has also gained the title of Authorized Distributor of ZF Off Highway Parts.

If your business needs a maintenance schedule with competitive pricing, contact us for a long-term service agreement.



www.dmsnamibia.com



Dynamic Marine Survey & Solutions is approved MTU Service Dealer:

Under this agreement we can conduct Service Dealer Operations in Namibia and Angola. Dynamic Marine Survey & Solutions has the right to buy Parts for the following Products and, if available, remanufactured Parts in the conduct of its Service Dealer Operations.

- Parts for Diesel and Gas engines, as well as Diesel and Gas Systems as listed below;
- Parts for Diesel systems equipped with engine series other than listed under a), Power Drive Units (PDU), on-board generators, pumps, and all other combinations branded with any brand used by COMPANY and/or Manufacturer(s);
- Parts and remanufactured Parts for the available out of production engines, according to the below listed applications plus (if applicable) on-highway applications for 2-cycle engines;
- Parts for the respective Monitoring and Control Systems
- Specific Products for the applications:
 - reman engines
 - swing engines
 - exchange engines
 - repowered engines
 - MB engines

Product Rights Service Sales Application include:

Commercial Marine, Oil & Gas, Rail, C&I / Mining / Agriculture, Powergen Diesel, Powergen Gas



Portfolio



Propulsion Services:

We specialize in servicing various types of propulsion systems, including bow thrusters, main propulsion thrusters, and main shaft lines. Our services are tailored to meet the original equipment manufacturer (OEM) specifications or can be customized to accommodate specific customer preferences and requirements.



Engine overhauls:

With our highly skilled in-house team of specialists, we have the capability to expertly overhaul a wide range of engines. Our expertise extends to renowned brands such as Rolls-Royce Bergen, MTU, MAN, Wartsilla, Volvo, Deutz, Stork, Pielstick, Cummins, and Yanmar Engines. Whether it's addressing breakdowns, performing planned maintenance, or troubleshooting, our team possesses a wealth of knowledge and hands-on experience. You can trust us to handle your engine servicing needs with precision and efficiency, ensuring optimal performance and reliability.

Portfolio



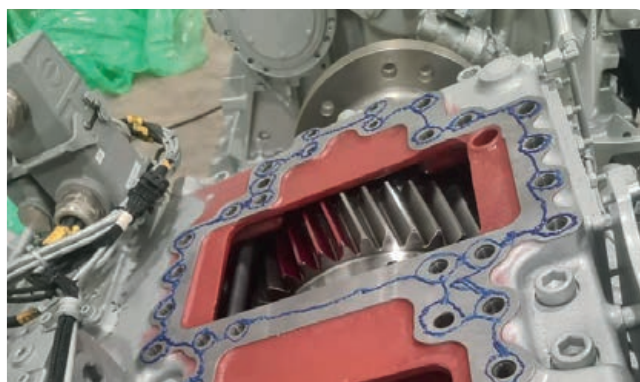
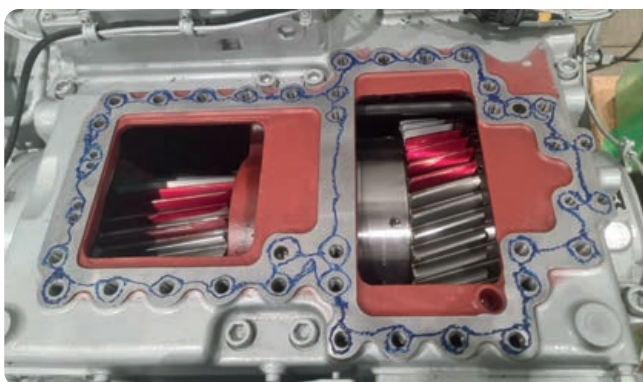
Deck Machinery Services:

We take pride in servicing a wide variety of deck machinery, such as winches, centering devices, towing pins, and cranes. Our dedicated team ensures that our services are meticulously aligned with the specifications set by the original equipment manufacturers (OEMs), guaranteeing optimal performance and long-lasting functionality. We understand that every customer has unique preferences and requirements, and therefore we go the extra mile to provide customized solutions tailored to their specific needs.



Scrubber installations:

Environmental awareness is as important as delivering excellent service. We have a specialized team who can install, commission and overhaul scrubber installations in cooperation with original equipment makers.



Gearbox Services:

We perform Service, Overhaul, and or Commission all the major brands of gearboxes. We can supply OEM spare parts with market confirm prices and we have a vast knowledge of the different applications being it the maritime industry or the use of gearboxes in mining applications.



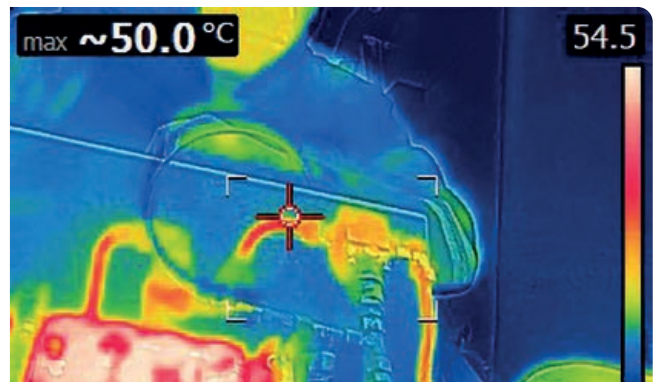
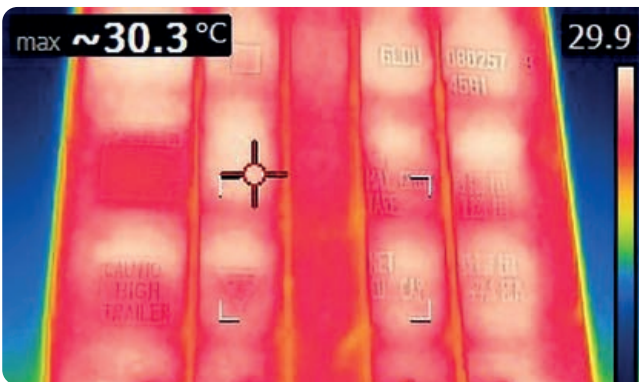
Laser alignment:

We can align any type of equipment onboard being it engines, motors, pumps, shaft lines or any type of propulsion, being it horizontal or vertical. We are able to work with any type of diameters and lengths.



Endoscope Inspections:

We have the ability to do endoscope inspections up to 2 meter length, with a 360° adjustable 5mm lens on a rigid cable. This allows us to create a full view on the inside of tight spaces.



Thermal imaging:

Whether you require cargo surveys, troubleshooting hydraulic systems, conducting switchboard surveys, or resolving electrical issues, our comprehensive range of thermal imaging solutions has got you covered. With advanced technology at our fingertips, we can accurately identify problem areas and ensure thorough inspections to determine the overall working condition of your equipment. Trust us to provide reliable assessments and keep your operations running smoothly.

Portfolio



Breaker Maintenance:

At your convenience, our teams excel in planning maintenance activities that align seamlessly with your vessel's operations, minimizing any disruptions to your schedule. Leveraging the latest advancements in test equipment technology, we conduct precise testing, maintenance, and even predict potential future equipment failures. This proactive approach empowers you to strategically plan ahead, ensuring smooth operations and optimal performance for your vessels. Rely on us to keep your equipment running smoothly while enabling effective long-term planning.



Machining:

Experience the precision and versatility of our machining services, which involves milling, turning, drilling, and surface grinding. Our team of highly skilled professionals is dedicated to meeting the diverse demands of our clients. With expertise in reading and interpreting engineering drawings, we ensure that every job is executed with meticulous attention to detail, meeting the required measurements and tolerances. Trust us to deliver exceptional results that align with your exact specifications.

***A maintenance schedule with competitive pricing,
contact us for a long term service agreement.***

www.dmssnamibia.com



Marine and cargo surveying

Marine and cargo surveying services are essential for ensuring the safety and efficiency of maritime operations. They involve a range of inspections, assessments, and audits carried out by our experienced professionals to identify and mitigate risks, prevent damage, and ensure compliance with regulations and industry standards.

Our Marine and Cargo Surveying Services include the following:

P&I Surveys

P&I surveys, or Protection and Indemnity surveys, are conducted for members of P&I clubs to assess and manage their risks and liabilities. Insurance surveys are similar but are carried out on behalf of insurers to evaluate the risk and determine the premium for marine insurance policies.

Marine Consulting

Our marine consulting services provide expert advice and support on various aspects of maritime operations, such as technical, regulatory, and commercial matters.

On/Off-Hire Surveys

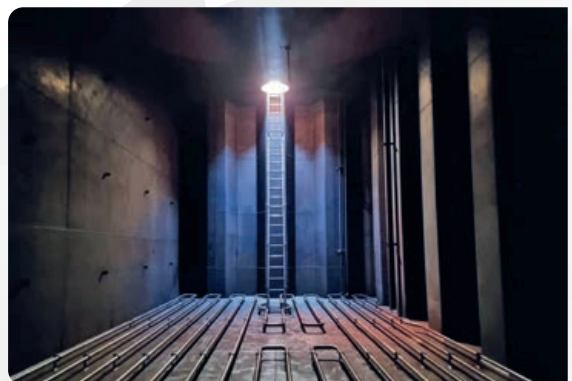
We conduct on/off-hire surveys to verify the condition of a vessel before and after it is hired or returned to the owner. Pre-purchase/condition surveys are carried out before a vessel is purchased to assess its condition and value.

Vessel and Cargo Damage Surveys

Damage surveys are conducted to investigate the cause and extent of damage to a vessel or cargo, and to determine the appropriate measures for repairs or compensation.

Superintendent and Project Management

Superintendents can be hired out to oversee the construction, repair, or maintenance of vessels as well as cargo operations. Project management services are provided for complex and large-scale maritime projects, such as shipbuilding, conversion, or renovation. Vessels that have been laid up can also be re-commissioned with the assistance of surveyors.



Cargo Surveys

Cargo surveys involve inspecting and assessing the condition and stowage of cargoes, as well as ensuring compliance with safety and environmental regulations.

Draft and Bunker Surveys

Draft surveys are conducted to measure the weight and volume of cargo loaded or discharged from a vessel, while bunker surveys determine the quantity and quality of fuel onboard.

STS Operations Surveys

STS Ops surveys are conducted for Ship-to-Ship operations to ensure compliance with industry guidelines and safety measures.

IHM Surveys

IHM surveys, or Inventory of Hazardous Materials surveys, are conducted to identify and manage hazardous materials onboard vessels.

Condition & Valuation surveys

Condition & valuation surveys are mainly done for insurance and financing purposes. The surveys are thorough inspections carried out inspecting every aspect of the vessels structure, machinery, operations, capabilities, and management. For the potential buyer, a condition & valuation survey is crucial for making the right choice of vessel.

Winch Overhauls

At Dynamic Marine Survey & Solutions, we pride ourselves on our ability to provide comprehensive solutions for all marine winch repairs. Our team of experienced electrical and control engineers is well-equipped to handle winches of all sizes and makes, with expertise in providing complete overhauling services and supplying spare parts that include load cells, bearings, and junction boxes.



ISM/ISPS/MLC/MWS/OVID/CMID Audits

ISM/ISPS/MLC audits are carried out to ensure compliance with international safety, security, and labor standards. MWS audits, or Marine Warranty Surveys, are required for high-risk maritime operations such as heavy lifts and subsea installations. OVID and CMID audits are specific assessments of offshore vessels and platforms.

Marine Representative Services

Marine Rep services provide representation and support for ship owners, charterers, and other stakeholders in legal and commercial disputes. Heavy lift surveys are carried out to plan and execute the safe and efficient transportation of heavy or oversized cargoes.

Noise and Emissions Surveys

Noise and Emissions surveys are carried out to assess and control the noise and gas emissions levels onboard vessels.

Overall, marine and cargo surveying services play a critical role in ensuring the safety, compliance, and efficiency of maritime operations, and provide valuable support and advice to the industry stakeholders.

We offer our services on a wide range of winch brands, including ME windlass, Kraaijeveld, and all other types and brands. Our team is also experienced in offering commissioning, maintenance, installation, Bollard pulls testing, and inspections on all the winches mentioned above.

We specialize in a variety of winch repairs, including anchor winches, windlasses, mooring winches, towing winches, anchor mooring winches, and more. With our team's expertise and well-equipped facilities, we are dedicated to delivering high-quality, timely, and reliable solutions to all our customers.

Repower Solutions

The primary reason for repowering is the need to lower the total cost of ownership. In order to achieve this a company needs to find a partner with industry knowledge, expertise and the capacity to not only provide the package but to do so cost effectively, providing a long term, sustainable program supporting the fleet.



The repower package which offers the lowest Cost of Ownership must add value and provide solid customer benefits in the following key areas:

- Productivity
- Fleet availability
- Fuel consumption
- Cost per Ton moved

Typical parts included in a repower (DMSS Supply)

- New engine to best fit the application
- New stainless-steel coolant, air-intake and exhaust piping integrated to fit the OEM piping
- New re-designed radiator, cowling and fan to suit the engine, site conditions and heat load requirement
- New re-designed or modified skidframe, mounting points and cradle brackets to fit the engine into the original mounting position
- New driveline with guards
- New hanger brackets to fix and align all piping
- Integration into the OEM electronics and the optimization of the control system with the new engine for optimal fuel consumption efficiency.
- Integration of the OEM fuel system with the new engine filtration system
- Bending moment calculation of module as well as torsional vibration calculation of driveline



Repower Examples (off-the-shelf solutions)

Haul Dump Trucks:

- Komatsu 730, 830, 860, 930, 960 & 980
- Hitachi Euclids, EH4000 & EH4500
- Liebherr T282
- Terex MT3700 and MT4400

Loaders:

- LeTourneau loader L1850 and L2350

Excavators:

- Komatsu PC3000 & PC8000
- Hitachi EX2500, EX3600, EX5000, EX5500
- Liebherr R9800

Engineering capabilities:

- Repower projects including Offshore supply vessels, Mining haul trucks, excavators and loaders.
- Following strict OEM engineering processes following PMBOK principles
- Tailormade engineering work packages
- Risk analysis and failure investigations
- Maintenance optimization for maximum fleet availability
- Fuel consumption and productivity optimizing for the lowest cost per ton moved



Propulsion

In order to meet the needs of the maritime industry, Dynamic Marine Survey and Solutions offers a variety of Propulsion services. As a part of our maintenance services, we perform overhauls, seal changes, and supply components to customers on the following components: tail shafts, azimuths, tunnel thrusters, and so forth.

It is our privilege to carry out our services both locally and abroad, with our team peregrinating all over Africa, Europe, and wherever our clients request us to do so. On the propulsion side, we cater to some of the most renowned names in the maritime industry:

- Niigata
- Kongsberg
- Nakashima
- Schottel
- Kawasaki
- BERG
- Wartsila



Electrical Engineering

Dynamic Marine Survey & Solutions has a team of electrical service engineers with a vast knowledge and experience in automation and control systems. Our diverse and flexible team is equipped from installations on new build vessels, modifications and upgrades on old vessels, to full fault-finding in all electrical aspects. All service engineers are on shore and off shore orientated, from Oil rigs, semi submersibles, cargo & tankers, PSVs to fishing vessels. We provide services on propulsion control systems.



- Navigation systems
- Guidance systems
- Power systems
- Engine Control systems
- Cargo monitoring systems
- Crane control systems
- Winch control systems
- Cathodic protection systems
- Temperature control systems
- Fire detection systems

Electrical Switchgear

Arguably the most important system on a vessel and often the most overlooked. As part of class requirements switchgear needs to undergo routine maintenance. We offer a complete switchgear maintenance & repair package covering the switchgear busbars, current & voltage transformers, protection relays, automation & control systems and circuit breakers.



Once understanding your requirements, a tailor made package can be executed at your location be it land, offshore or at port. Our teams can plan maintenance around your vessels operations to ensure minimum disruptions to your schedule. We use the latest technology in test equipment to accurately test, maintain and predict possible future equipment failure to allow you to plan in advance, minimizing your downtime. Furthermore, our skilled team can source all switchgear spares and conduct onsite repairs to minimize your downtime and remove the hassle of time consuming logistics.

3D Laser Scanners

3D Laser Scanners use non-contact technology that senses the shape of an object through the use of laser light.

The software transforms the data collected from the hardware into an accurate, digitalized 3D representation of the object.

Capabilities from scan data

(Engineering – Structural)

- CAD / BIM delivery in almost any software package
- Visual inspections and reporting
- Damage assessment
- Deformation and alignment checks
- Quantity estimation
- Fabrication drawings
- Sections, elevations, floor plans

Other capabilities

- Clash detection
- How new designs/modifications tie into existing structures
- As-built 3D models
- Virtual Tours
- Compare design to as-built
- Construction verification



Controls and automation



Control & Automation

Controls and Automation form the backbone of automated mechanical systems and data capturing onboard vessels. With our team trained on Rolls-Royce as well as Kongsberg Controls and automation, we possess the correct knowledge and experience to assist you with your control and automation problems under failure conditions, new installations as well as commissioning of new systems. Our engineers are trained and experienced on Siemens for unique programming, control logic as well as HMI interfacing to the client needs and requirements.

Control & Automation

Calibration & Verification

Calibration & Verification is a sure way to operate systems efficiently and with cost effectiveness in mind. Keeping in touch with global standards for industry, one needs to ensure that equipment and plant are operating correctly. At our calibration division we provide expert solutions for Temperature, Pressure and Electrical metrology. The skilled team is able to calibrate and verify a wide range of equipment in the above mentioned fields. Our standards are in line with the international standards for calibration laboratories. Furthermore our team is equipped with advanced portable equipment which allows us to provide our services anywhere in the world, be it land, port or offshore. Our team is trained in not only calibrating and verifying your equipment, but to perform overhauls on sensors and equipment to get them operating accurately at a fraction of the replacement cost.

Overhaul & Calibration



DP trials and Commissioning

FMEA & DP Trials

Dynamic Marine Survey & Solutions possesses the correct technical, analytical as well as experience level to perform a full DP FMEA (Failure Mode and Effect Analysis) as well as DP Annual Trials. This allows us to fully test and simulate failure conditions a wide variety of DP (Dynamic Positioning) Systems to the correct classification standards to ensure that these offshore vessels comply to classifications society rules & regulations.



FMEA & DP Trials

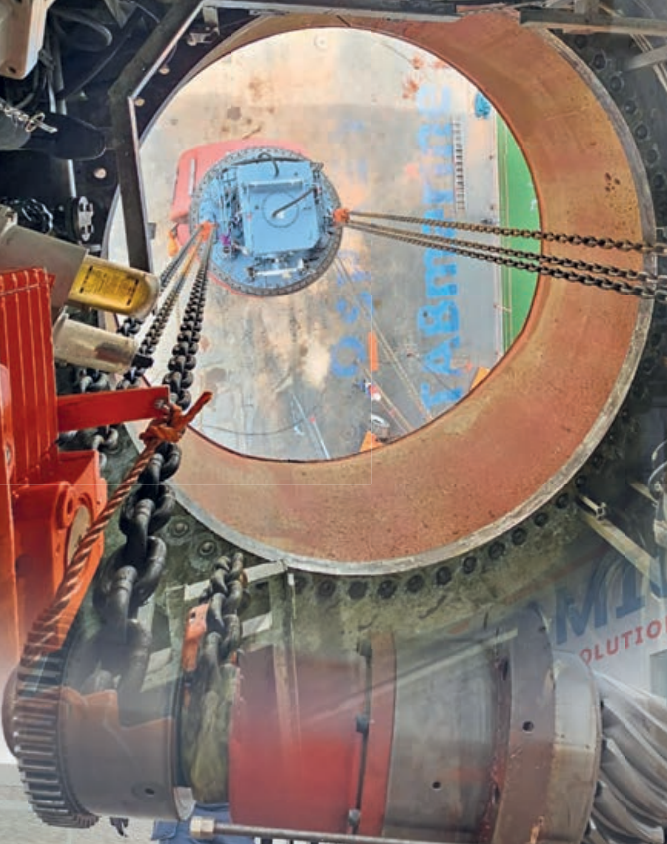


Installation & Commissioning

Installation & Commissioning

Dynamic Marine Survey & Solutions focuses on supplying our customers with a team of qualified engineers to perform installation, setup as well as interfacing of new equipment to Automation or Dynamic Positioning system. This accompanied by the correct documentation, customer specific compiled manuals to aid the customer needs.







At Dynamic Marine Survey & Solutions
we have your best interests at heart.



The Dynamic Team offers 24Hr system solutions and support from our Namibian, South African and Netherlands office.

Address:

 C/O Langerheinrich Crescent & Rössing Street erf 4443, Walvis Bay, Namibia

 P.O.Box 9090, Walvis Bay, Namibia

 www.dmsnamibia.com


 Dynamic Marine Survey & Solutions

 [dynamic-marine-survey-solutions](https://www.linkedin.com/company/dynamic-marine-survey-solutions)

 [dynamic_africa](https://www.instagram.com/dynamic_africa)

Co-Owners:

 **PATRICK ADAM** +264 (0)81 324 7369 **(24/7 HR)**

 **WERNER AHRENS** +264 (0)81 285 1810 **(24/7 HR)**

 **ANDRE ZANDBERG** +264 (0)81 451 0155 **(24/7 HR)**

+27 (0)79 743 2903 **(SA)**